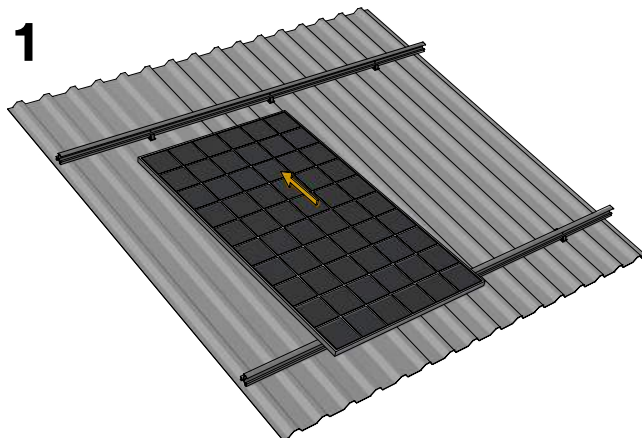
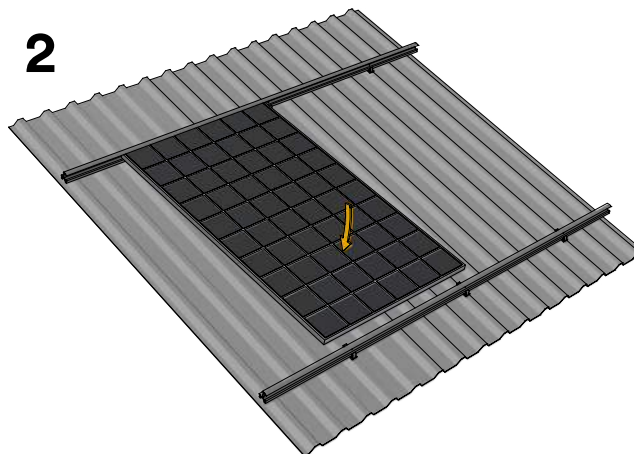
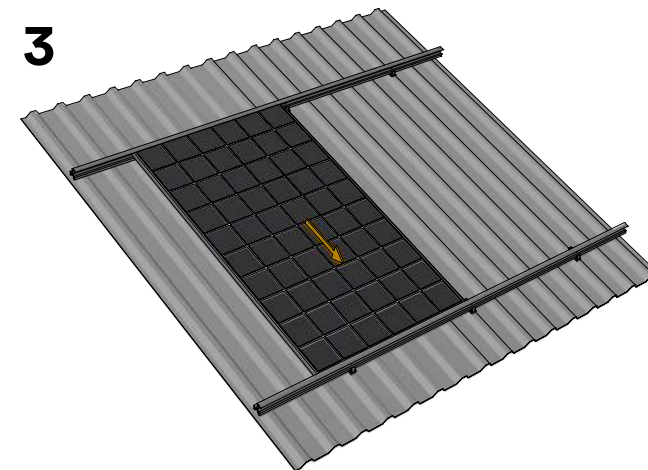


1**2****3**

EPDM Module Securing Installation Instructions

In this manual, we will demonstrate the installation method of the module securing, a rubber clamp. The installation of the module securing is only necessary when the solar modules have an angle of less than 12 degrees of inclination. Install the module securing on the top between the solar modules. After installing the module securing, the next solar module can be immediately installed.

The item number of the module securing is 34047.

